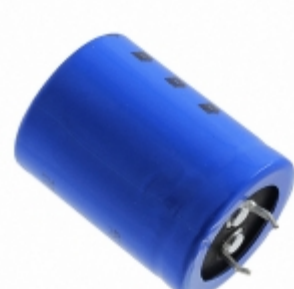


MAL215867392E3



Part Number: [MAL215867392E3](#)
Manufacturer: [Electro-Films \(EFI\) / Vishay](#)
Description: CAP ALUM 3900UF 20% 40V SNAP
Data sheet: [158 PUL-SI \(MAL2158\) Series](#)
[Aluminum Electrolytic Capacitors Guide](#)

RoHS Status: Lead free / RoHS Compliant
Ship From: Hong Kong
Shipment Way: DHL/Fedex/TNT/UPS/EMS

Images are for reference only.
 See Product Specifications for product details.
 Buy MAL215867392E3 with confidence from
 Component-World.HK, 1 Year Warranty

[Request For Quotation](#)

PRODUCT PARAMETER

Part Number	MAL215867392E3	Manufacturer	Electro-Films (EFI) / Vishay
Description	CAP ALUM 3900UF 20% 40V SNAP	Lead Free Status / RoHS Status	Lead free / RoHS Compliant
Quantity Available	19846 pcs	Data sheet	158 PUL-SI (MAL2158) Series Aluminum Electrolytic Capacitors Guide
Category	Capacitors	Voltage - Rated	40V
Tolerance	±20%	Surface Mount Land Size	-
Size / Dimension	0.984" Dia (25.00mm)	Series	158 PUL-SI
Ripple Current @ Low Frequency	3.02A @ 100Hz	Ratings	-
Polarization	Polar	Packaging	Bulk
Package / Case	Radial, Can - Snap-In - 3 Lead	Operating Temperature	-40°C ~ 105°C
Mounting Type	Through Hole	Moisture Sensitivity Level (MSL)	1 (Unlimited)
Manufacturer Standard Lead Time	21 Weeks	Lifetime @ Temp.	5000 Hrs @ 105°C
Lead Spacing	0.394" (10.00mm)	Lead Free Status / RoHS Status	Lead free / RoHS Compliant
Impedance	65 mOhms	Height - Seated (Max)	1.260" (32.00mm)
ESR (Equivalent Series Resistance)	83 mOhm @ 100Hz	Detailed Description	3900µF 40V Aluminum Electrolytic Capacitors Radial, Can - Snap-In - 3 Lead 83 mOhm @ 100Hz 5000 Hrs @ 105°C
Capacitance	3900µF	Applications	General Purpose

Component-World.com is a Reliable Stocking Distributor of Electronic Components. We specialize in all Electro-Films (EFI) / Vishay series electronic components. We have 19846 pieces of Electro-Films (EFI) / Vishay MAL215867392E3 in stock available now. Request a quote from electronics components distributor at Component-World.com, our sales team will contact you within 24 hours.
 RFQ Email: info@Components-World.com

RELATED PRODUCTS

	Part#: MAL215867562E3 Description: CAP ALUM 5600UF 20% 40V SNAP	Manufacturers: Electro-Films (EFI) / Vishay	RFQ
	Part#: MAL21586682E3 Description: CAP ALUM 6800UF 20% 25V SNAP	Manufacturers: Electro-Films (EFI) / Vishay	RFQ
	Part#: MAL215862222E3 Description: CAP ALUM 2200UF 20% 80V SNAP	Manufacturers: Electro-Films (EFI) / Vishay	RFQ
	Part#: MAL215862152E3 Description: CAP ALUM 1500UF 20% 80V SNAP	Manufacturers: Electro-Films (EFI) / Vishay	RFQ
	Part#: MAL215866103E3 Description: CAP ALUM 10000UF 20% 25V SNAP	Manufacturers: Electro-Films (EFI) / Vishay	RFQ
	Part#: MAL215862332E3 Description: CAP ALUM 3300UF 20% 80V SNAP	Manufacturers: Electro-Films (EFI) / Vishay	RFQ
	Part#: MAL215871562E3 Description: CAP ALUM 5600UF 20% 50V SNAP	Manufacturers: Electro-Films (EFI) / Vishay	RFQ
	Part#: MAL215869102E3 Description: CAP ALUM 1000UF 20% 100V SNAP	Manufacturers: Electro-Films (EFI) / Vishay	RFQ
	Part#: MAL215865153E3 Description: CAP ALUM 15000UF 20% 16V SNAP	Manufacturers: Electro-Films (EFI) / Vishay	RFQ
	Part#: MAL215866822E3 Description: CAP ALUM 8200UF 20% 25V SNAP	Manufacturers: Electro-Films (EFI) / Vishay	RFQ
	Part#: MAL215871472E3 Description: CAP ALUM 4700UF 20% 50V SNAP	Manufacturers: Electro-Films (EFI) / Vishay	RFQ
	Part#: MAL215868332E3 Description: CAP ALUM 3300UF 20% 63V SNAP	Manufacturers: Electro-Films (EFI) / Vishay	RFQ
	Part#: MAL215868222E3 Description: CAP ALUM 2200UF 20% 63V SNAP	Manufacturers: Electro-Films (EFI) / Vishay	RFQ
	Part#: MAL215869152E3 Description: CAP ALUM 1500UF 20% 100V SNAP	Manufacturers: Electro-Films (EFI) / Vishay	RFQ
	Part#: MAL215867822E3 Description: CAP ALUM 8200UF 20% 40V SNAP	Manufacturers: Electro-Films (EFI) / Vishay	RFQ
	Part#: MAL215862182E3 Description: CAP ALUM 1800UF 20% 80V SNAP	Manufacturers: Electro-Films (EFI) / Vishay	RFQ
	Part#: MAL215865123E3 Description: CAP ALUM 12000UF 20% 16V SNAP	Manufacturers: Electro-Films (EFI) / Vishay	RFQ
	Part#: MAL215869122E3 Description: CAP ALUM 1200UF 20% 100V SNAP	Manufacturers: Electro-Films (EFI) / Vishay	RFQ
	Part#: MAL215865103E3 Description: CAP ALUM 10000UF 20% 16V SNAP	Manufacturers: Electro-Films (EFI) / Vishay	RFQ
	Part#: MAL215868272E3 Description: CAP ALUM 2700UF 20% 63V SNAP	Manufacturers: Electro-Films (EFI) / Vishay	RFQ

Related keywords for MAL215867392E3

Electro-Films (EFI) / Vishay MAL215867392E3	MAL215867392E3 distributor	MAL215867392E3 supplier	MAL215867392E3 price
MAL215867392E3 download datasheet	MAL215867392E3 datasheet	MAL215867392E3 stock	buy MAL215867392E3
Electro-Films (EFI) / Vishay MAL215867392E3	Electro-Films (EFI) / Vishay MAL215867392E3	Vishay Electro-Films MAL215867392E3	Phoenix Passive Components / Vishay
			MAL215867392E3